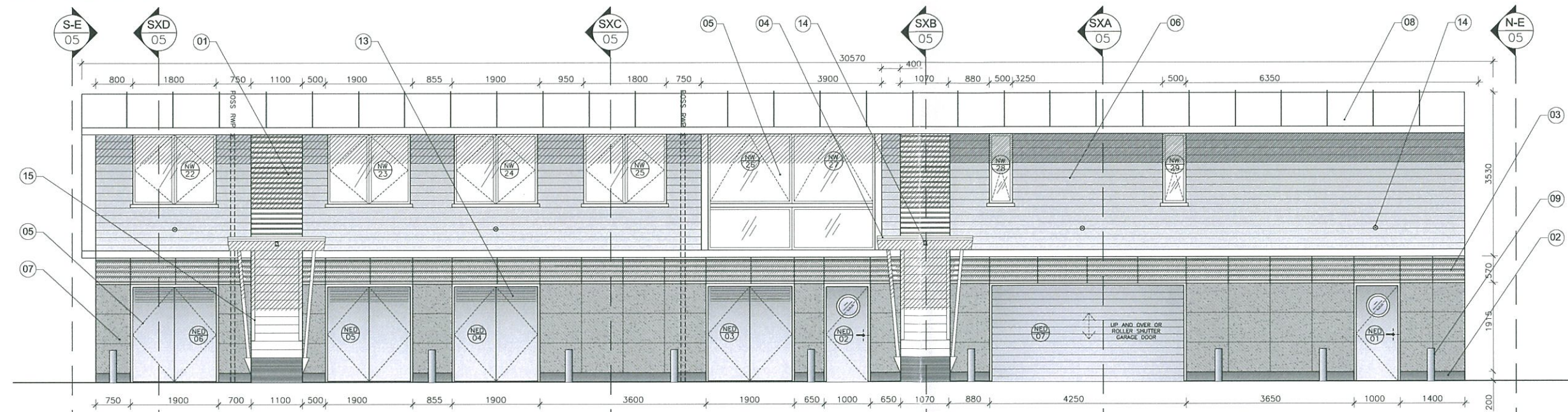
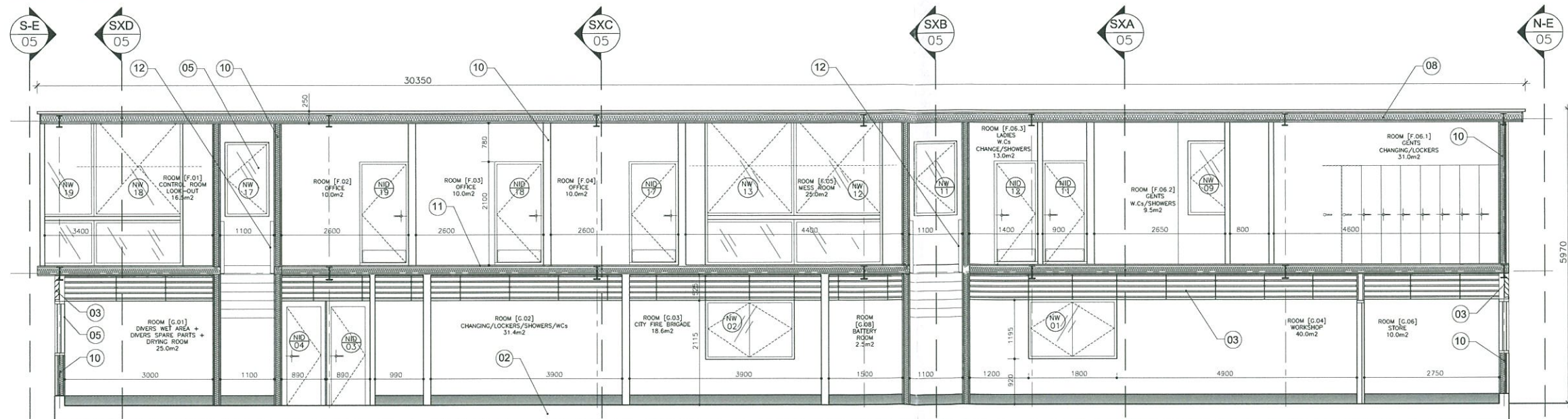


**WEST ELEVATION**



**EAST ELEVATION**



**SECTION E**

**NOTES:**  
DO NOT SCALE OFF THIS DRAWING. CHECK DIMENSIONS ON SITE PRIOR TO COMMENCEMENT. THIS DRAWING IS THE COPYRIGHT OF WSRM ARCHITECTS LTD. AND MUST NOT BE COPIED OR REPRODUCED, IN PART OR IN WHOLE, WITHOUT PERMISSION OF WSRM ARCHITECTS LTD. TO BE READ IN CONJUNCTION WITH OTHER RELEVANT CONSULTANTS INFORMATION.

**DRAWING NOTES:**

01. ALUMINUM POLYESTER POWDER COATED BRIGE-SOLEL INTEGRATED LOUVERED SYSTEM, AS TECHNICAL SPECIFICATION OR SIMILAR APPROVED.
02. NOMINAL 300MM THICK REINFORCED CONCRETE SLAB WITH 'UPTURNED' PERIMETER CONCRETE TOE, OVER DPM TO STRUCTURAL OR SPECIALIST DESIGN DETAILS.
03. ALUMINUM VENTILATION LOUVERS AS RENSON OR SIMILAR, RESISTANT TO STORM RAIN DRIVEN WATER PENETRATION AND INTEGRAL INSECT MESH WITHIN.
04. LEAN TO MARINE GRADE GALVANISED STEEL CANOPY TO S.E. DESIGN SPECIFICATIONS, WITH COVERING TO MATCH MAIN ROOF.
05. EXTERNAL WINDOWS AND DOORS TO BE EITHER PART OF THE PREFABRICATED PACKAGE OR PROPRIETARY THERMALLY BROKEN DOUBLE GLAZED ALUMINUM SECTION WINDOWS OR SIMILAR, WITH PLYWOOD FACED SOLID CORE EXTERNAL DOORS PAINTED IN SUITABLE MARINE QUALITY PAINT FINISH AND INTERNATIONAL PERFECTION 700 PAINT. OF SIMILAR CONTRACTOR TO SUBMIT/ QUALIFY PREFERRED PROPOSAL WITH TENDER FOR PROJECT MANAGER'S APPROVAL. PROPOSED SYSTEMS TO BE DESIGNED AND SPECIFIED FOR THE KNOWN ENVIRONMENTAL CONDITIONS AND BUILDING PURPOSE.
06. HORIZONTAL WEATHERBOARDING TO BE GLASSFIBRE REINFORCED CONCRETE BOARDS AS DTD SHN BY FRYEDER OR SIMILAR, FIXED IN ACCORDANCE WITH SUPPLIERS RECOMMENDATIONS. FACTORY FINISH LIGHT GREY. CONTRACTOR TO SUBMIT AND QUALIFY PROPOSALS WITH TENDER FOR PROJECT MANAGER'S APPROVAL.
07. SELF FINISH HIGH PERFORMANCE EXTERNAL GLASSFIBRE REINFORCED CONCRETE CLADDING BOARDS AS Fibrec BY REDIER, OR SIMILAR. FACTORY FINISH DARK GREY. CONTRACTOR TO SUBMIT AND QUALIFY PROPOSALS WITH TENDER FOR PROJECT MANAGER'S APPROVAL.
08. SELF FINISH SINGLE PLY HIGH PERFORMANCE FULLY BONDED FELT AS SARNAR, OR SIMILAR APPROVED, OVER INSULATION AND TRADITIONAL PURLIN AND PLYWOOD ROOF BUILD UP OR PROPRIETARY PREFABRICATED ROOF PANEL SYSTEM AS KINGSPAN KINGZIP K51000 STANDING SEAM ROOF.
09. GALVANISED STEEL PROTECTIVE BOLLARDS
10. 150MM O/A VERTICAL EXTERNAL PANELS WITH INTEGRAL STRUCTURE, ACOUSTIC/ THERMAL INSULATION AS REQUIRED, DPM'S AND VAPOUR BARRIERS AS REQUIRED, EXTERNAL LINING/CLADDING, INTERNAL LINING/FINISH SYSTEM/SUPPLIER TO BE AS PER CONTRACTOR'S PROPOSAL SUBJECT TO PROJECT MANAGER'S COMMENTS APPROVAL AND SUITABLE FOR INTENDED USE AND ENVIRONMENT.
11. 200MM O/A HORIZONTAL FLOOR ZONES WITH INTEGRAL STRUCTURE (DOWNSTAND BEAMS TO BE PROVIDED IF REQUIRED AT STRUCTURAL GRIDS INDICATED), ACOUSTIC/ THERMAL INSULATION AS REQUIRED, DPM'S AND VAPOUR BARRIERS (TO WET AND SHR AREAS) AS REQUIRED EXTERNAL LINING/CLADDING RUBBER OR NON-SLIP VINYL (H) TO FLOOR AREAS ON UPPER LEVEL, OVER STRUCTURAL DECK. SYSTEM/ SUPPLIER TO BE AS PER CONTRACTOR'S PROPOSAL SUBJECT TO PROJECT MANAGER'S COMMENTS APPROVAL AND SUITABLE FOR INTENDED USE AND ENVIRONMENT.
12. ELONDO TIMBER HANGAR, 100MM WIDE X 50MM DEEP (OVAL), MARINE GRADE STAINLESS STEEL CONNECTIONS.
13. EXTERNAL LOUVERED DOOR TO ALLOW CROSS VENTILATION AND DRYING.
14. OUTDOOR LED LIGHTS.
15. ALL WEST FACING WINDOWS TO BE GLAZED WITH REFLECTIVE GLASS + INTERNAL SOLAR DIM-OUT BLINDS PROTECTED.
16. FINAL EMBLEM/SIGN DESIGN TO BE IN ACCORDANCE WITH INFORMATION SUPPLIED BY CLIENT.

rev	date	amendments
A	16.10.13	SECTION SXE UPDATED TO MATCH CHANGES IN LAYOUT PLANS REV A
B	23.10.13	NOTES ADDED

**TENDER DOCUMENT**

rev	date	amendments
-----	------	------------

**WSRM architects**  
1.2.20 EURO TOWERS  
PO BOX 474  
GIBRALTAR

Tel: (350) 200 74647  
Fax: (350) 200 74683  
Email: arch@wsrm.gi  
Web: www.wsrmltd.gi

CLIENT  
**GOVERNMENT OF GIBRALTAR**

PROJECT  
**PROPOSED NEW GIBRALTAR GOVERNMENT MARINE STATION**

DRAWING TITLE  
**WEST AND EAST ELEVATIONS SECTION E**

SCALE	JOB + DRG REF No.	REV
1:50@A1	G453.1[3-004]_GA-ELEV+SX-60	B
DATE		
28.08.13		